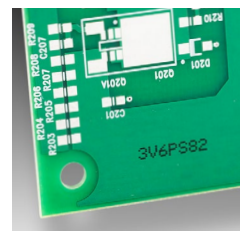
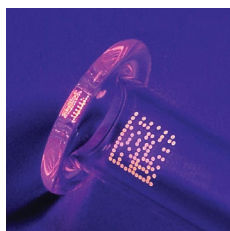




Continuous Inkjet





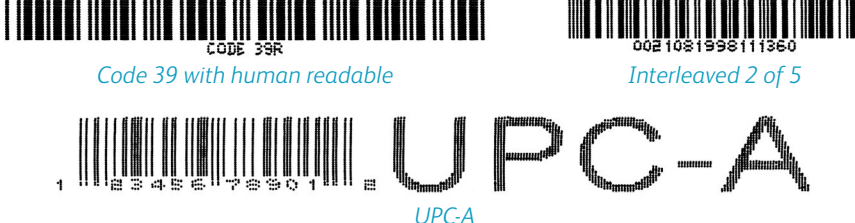

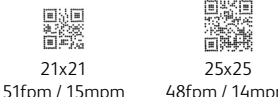
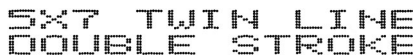

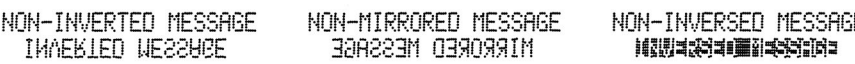


# Videojet SIMPLiCiTY™ print sample guide



| Videojet SIMPLICiTY™ print sample guide |  |
|---|--|
| Font/Lines                              | Print Sample*  |
| 4x5 Single                              | ABCDEFGF 12345 4X5   |
| 5x5 Single                              | ABCDEFGF 12345 5X5   |
| 4x7 Single                              | ABCDEFGF 12345 4X7   |
| 5x7 Single                              | ABCDEFGF 12345 5X7   |
| 7x9 Single                              | ABCDEFGF 12345 7X9   |
| 9x12 Single                             | ABCDEFGF 12345 9X12  |
| 10x16 Single                            | ABCDEFGF 12345   |
| 16x24 Single                            | ABCDEFGF 123   |
| 25x34 Single                            | ABCD 12  |
| 4x5 Twin                                | ABCDEFGHIJKLMNO<br>1234567890  |
| 5x5 Twin                                | ABCDEFGHIJKLMNOP<br>1234567890 5X5 TL  |
| 4x7 Twin                                | ABCDEFGHIJKLMNOP<br>1234567890 4X7 TL  |
| 5x7 Twin                                | ABCDEFGHIJKLMNOP<br>1234567890 5X7 TL  |
| 7x9 Twin                                | ABCDEFGHIJKLMNOP<br>1234567890 7X9 TL  |
| 9x12 Twin                               | ABCDEFGHIJKLMN<br>1234567890 9X12 TL   |
| 10x16 Twin                              | ABCDEFGHIJKLMNOP<br>1234567890 10X16   |
| 4x5 Three                               | ABCDEFGHIJKLMNO<br>1234567890<br>3 LINES OF PRINT  |
| 5x5 Three                               | ABCDEFGHIJKL<br>123567890<br>5X5 TRI LINE  |
| 4x7 Three                               | ABCDEFGHIJKLMNO<br>1234567890<br>4X7 TRI LINE  |
| 5x7 Three                               | ABCDEFGHIJKLMNO<br>1234567890<br>5X7 TRI LINE  |
| 7x9 Three                               | ABCDEFGHIJKL<br>1234567890<br>7X9 TRI LINE   |
| 4x5 Four                                | ABCDEFGHIJKLMNO<br>1234567890<br>4 LINES OF PRINT<br>4 X 5 GUARD LINE                    |
| 5x5 Four                                | ABCDEFGHIJKLMNO<br>1234567890<br>4 LINES OF PRINT<br>5X5 GUARD LINE                      |
| 4x7 Four                                | ABCDEFGHIJKLMNO<br>1234567890<br>4 LINES OF PRINT<br>4 X 7 GUARD LINE                    |
| 5x7 Four                                | ABCDEFGHIJKLMO<br>1234567890<br>4 LINES OF PRINT<br>5X7 GUARD LINE                       |
| 5x5 Five                                | ABCDEFGHIJKLMNO<br>1234567890<br>5 LINES OF PRINT<br>5 X 5 FIVE LINE<br>60 MICRON NOZZLE |

| Max. line speed for font/lines as shown<br>feet per minute (fpm) / meters per minute (mpm) |             |             |             |             |
|--|-------------|-------------|-------------|-------------|
| 1240/1280  | 1580 +      | 1880 +      | 1880 HR     | 1880 UHS    |
| 640 / 195  | 1,097 / 334 | 1,097 / 334 | 1296 / 395  | 1,665 / 508 |
| 535 / 163  | 914 / 279   | 914 / 279   | 1,078 / 329 | 1,338 / 423 |
| 548 / 167  | 960 / 293   | 960 / 293   | 862 / 263   | 1,111 / 339 |
| 456 / 139  | 800 / 244   | 800 / 244   | 719 / 219   | 925 / 282   |
| 236 / 72   | 356 / 108   | 535 / 163   | 588 / 179   | 835 / 254   |
| 256 / 78   | 256 / 78    | 256 / 78    | 462 / 141   | 554 / 169   |
| 194 / 59   | 194 / 59    | 305 / 93    | 230 / 70    | 398 / 121   |
| 95 / 29  | 95 / 29     | 95 / 29     | 66 / 20     | 125 / 38    |
| 56 / 17  | 56 / 17     | 56 / 17     | NA          | NA          |
| 308 / 94   | 308 / 94    | 453 / 138   | 410 / 125   | 835 / 254   |
| 256 / 78   | 256 / 78    | 377 / 115   | 340 / 104   | 694 / 212   |
| 233 / 71   | 321 / 98    | 453 / 138   | 289 / 88    | 625 / 191   |
| 194 / 59   | 266 / 81    | 377 / 115   | 239 / 73    | 522 / 159   |
| 95 / 29  | 125 / 38    | 230 / 70    | 129 / 39    | 297 / 91    |
| 85 / 26  | 85 / 26     | 85 / 26     | NA          | NA          |
| 56 / 17  | 56 / 17     | 56 / 17     | NA          | NA          |
| 115 / 35   | 151 / 46    | 366 / 111   | 236 / 72    | 588 / 179   |
| 95 / 29  | 125 / 38    | 305 / 93    | 196 / 60    | 490 / 149   |
| 108 / 33   | 108 / 33    | 274 / 84    | 161 / 49    | 436 / 133   |
| 89 / 27  | 89 / 27     | 230 / 70    | 134 / 41    | 362 / 110   |
| 56 / 17  | 56 / 17     | 121 / 37    | NA          | NA          |
| 102 / 31   | 102 / 31    | 233 / 71    | NA          | NA          |
| 85 / 26  | 85 / 26     | 194 / 59    | NA          | NA          |
| 66 / 20  | 66 / 20     | 163 / 50    | NA          | NA          |
| 56 / 17  | 56 / 17     | 136 / 42    | NA          | NA          |
| 56 / 17  | 56 / 17     | 56 / 17     | NA          | NA          |

## Videojet SIMPLICITY™ print sample guide

| Description  | Print Sample*  |   |
|--|--|---|
| <p>Choice of 40, 50, 60 or 70 micron nozzle</p> <p>Options to print standard sized codes or bigger, bolder codes for higher contrast</p>   |  <p>40 Micron nozzle (1880 HR only)</p>                                     |  <p>50 Micron nozzle (1880 UHS only)</p> |
|  |  <p>60 Micron nozzle</p>  |  <p>70 Micron nozzle</p>                 |
| <p>Linear bar codes</p> <p>Wide range of bar codes for automatic identification. UPC-A&amp;E; EAN-8&amp;13; Code 128 A, B&amp;C; EAN-128; Code 39; Interleaved 2 of 5</p>                                  |  <p>Code 39 with human readable</p> <p>Interleaved 2 of 5</p> <p>UPC-A</p> |   |
| <p>2D Codes</p> <p>Wide range of standard 2D DataMatrix and QR (Codes shown were printed by the 1880 HR and max. line speed refers to 1880 HR only. Additional matrices available depending on model.)</p> |  <p>DataMatrix Codes</p>   |  <p>QR Codes</p>                         |
| <p>Multi-stroke</p> <p>Highlight words or numbers and make codes darker and bolder</p>   |    |   |
| <p>Tower print</p> <p>Stacked and automatic reverse</p>  |    |   |
| <p>Inverted / mirrored / inversed characters</p> <p>Accommodates product lines going any direction and products in various orientations on the production line</p>   |    |   |
| <p>Unique-character languages</p>  |  <p>Chinese</p> <p>Japanese</p> <p>Arabic</p>                            |   |
| <p>Graphics and logos</p> <p>Create custom logos on PC and upload via USB</p>  |    |   |

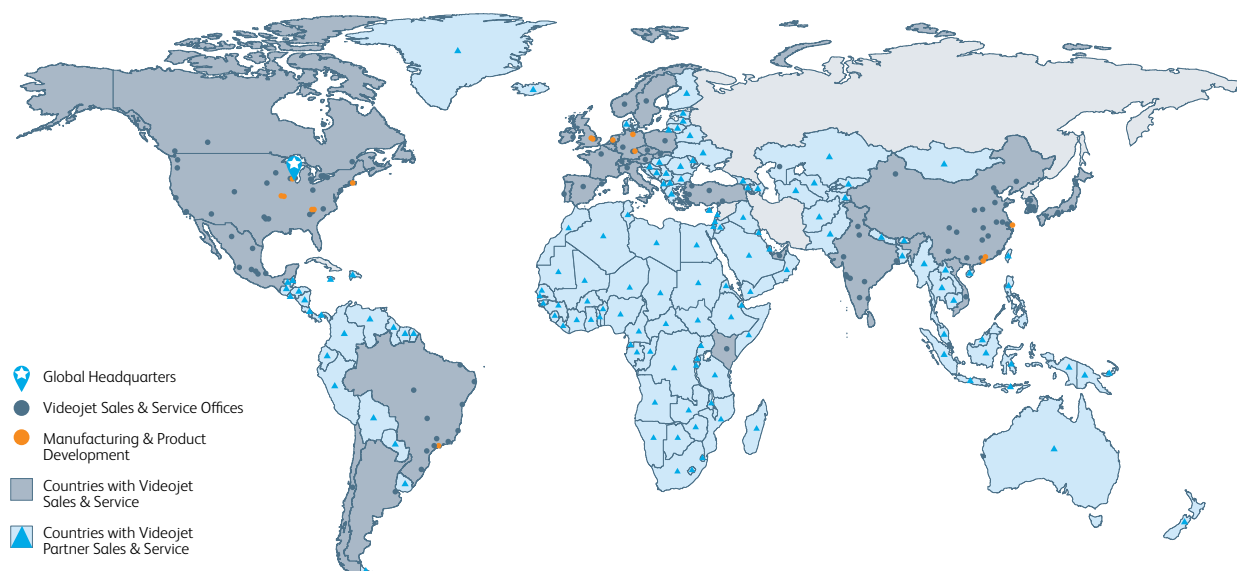
\*The print sample codes shown in this guide are for illustrative purposes only. Actual coding is dependent on environment, application, raster and substrate. The Videojet SIMPLICITY™ continuous inkjet printers use automatic select function to determine the suitable raster for the actual print speed. Please ask your local Videojet representative to see print samples for your specific application.

# Peace of mind comes as standard

Videojet Technologies is a world-leader in the product identification market, providing in-line printing, coding, and marking products, application specific fluids, and product LifeCycle Support.

Our goal is to partner with our customers in the consumer packaged goods, pharmaceutical, and industrial goods industries to improve their productivity, to protect and grow their brands, and to stay ahead of industry trends and regulations. With our customer application experts and technology leadership in Continuous Inkjet (CIJ), Thermal Inkjet (TIJ), Laser Marking, Thermal Transfer Overprinting (TTO), case coding and labeling, and wide array printing, Videojet has more than 400,000 printers installed worldwide.

Our customers rely on Videojet products to print on over ten billion products daily. Customer sales, application, service and training support is provided by direct operations with over 4,000 team members in 26 countries worldwide. In addition, Videojet's distribution network includes more than 400 distributors and OEMs, serving 135 countries.



**New printer quote 866-871-3226**

Order supplies [shop.videojet.com](https://shop.videojet.com)  
Call **800-843-3610**  
Email [info@videojet.com](mailto:info@videojet.com)  
or visit [www.videojet.com](https://www.videojet.com)

Videojet Technologies Inc.  
1500 Mittel Blvd. Wood Dale IL 60191 / USA

©2024 Videojet Technologies Inc. — All rights reserved.

Videojet Technologies Inc.'s policy is one of continued product improvement. We reserve the right to alter design and/or specifications without notice.

Part No. SL000701  
pg-simplicity-printers-us-0224  
Printed in U.S.A.

